

INSPIRATIONS
CLOSE TO YOU

TEXTURE XTREME MATT

MADE FOR XTREME DEMANDS

DUROPAL

thermopal

 PFLEIDERER

INSPIRATIONS CLOSE TO YOU

ONE PFLEIDERER: INSPIRATIONS CLOSE TO YOU – FOR YOUR WORK AND YOUR REQUIREMENTS.

The Pfleiderer brand has reorganised itself. A new, international and powerful brand has emerged from the amalgamation of Pfleiderer Grajewo and Pfleiderer GmbH.

In the course of this process we have been able to harmonise all the production locations, simplify the processes and optimise our product range and services. Thus, you now have access to a range of decors, surface textures and sizes that are identical throughout the world and unique in its breadth and depth.

For you, One Pfleiderer means: a strong partner for high-quality wood-based panels with outstanding decorative surface expertise, customer-oriented service and a consistent focus on sustainability. And last but not least, countless creative and practice-oriented “inspirations close to you”.

XTREMELY ROBUST,
XTREMELY VERSATILE,
XTREMELY BEAUTIFUL.



The aspiration behind developing this Pfeleiderer innovation: To create a structure in HPL quality, but above and beyond the standard of today. Thus, XTreme Matt is captivating with its unique appearance, enormous colour transparency and depth – with a comfortably warm, velvety soft feel.

Although the matt, low-reflection surface appears particularly precious, the structure proves robust, durable, and easy-care. The warm, “soft” surface invites you to touch it – without any lasting fingerprints or traces of grease. XTreme Matt by far exceeds the scratch resistance of comparable matt surfaces. Furthermore it is resistant to normal household detergents. As one of few products of its kind, XTreme Matt has post-forming quality.

CONTENT

Inspiration and application fields	6
XTreme Matt decor collection	12
Decorative panels	14
Product properties	16
Chemical resistance	18
Care and cleaning	20
Workmanship tips	22
Sustainability	25
Contact	26



INSPIRATIONS AND APPLICATIONS

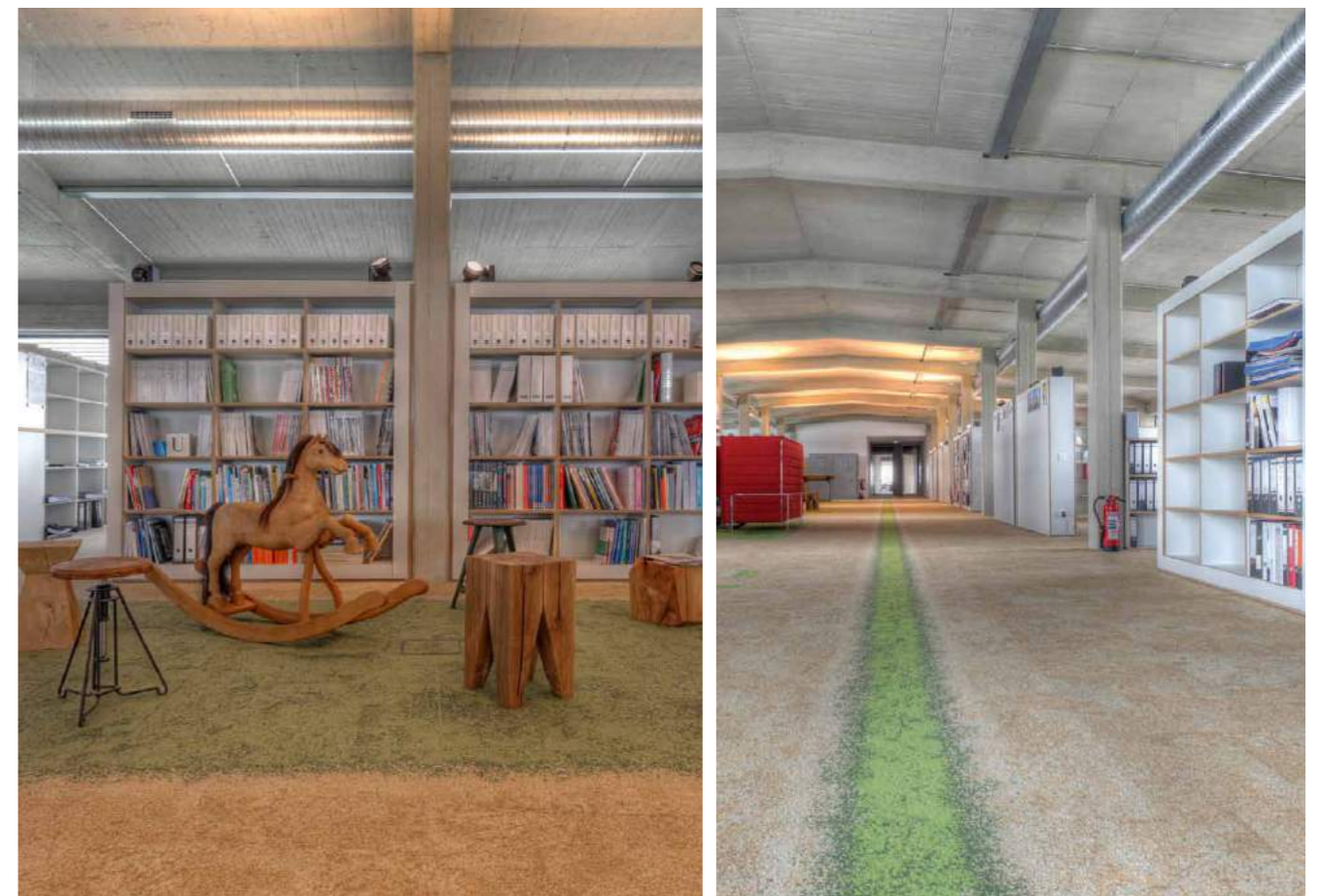
Please note: The following examples show a different matt surface from Pfeleiderer. The haptic perception of XTreme Matt makes the difference.



Dessange hairdresser's, Austria

Porsche centre Mannheim, Germany

© MIKE KÖNIG



Speicher 7, Mannheim, Germany

© Klaus Hackl, Mannheim, Germany



Maternity ward Elisabeth hospital, Essen, Germany

© Sylvia Leydecker



German-French children's group, Strasbourg, France

© Werkgruppe Lahr, Germany





Glutz Vital centre, Gerlingen, Germany

© matthiessen photography



Kitchen

DST DST collection in decor and surface match
X **DST-XPRESS** From stock and fast delivery range
 HPL also available in door sizes
 Also available as a worktop
SOC New: Also available as SolidColor



						STOCK PROGRAMME			
Decor reference	Coordinates	Reflection value	Description	NCS code	RAL	4,100 x 1,300 x 0.8 mm	Door HPL ¹⁾ 2,350 x 1,300 x 0.8 mm	SolidColor 4,100 x 1,300 x 0.8 mm	Worktops 4,100 x 600 / 900 / 1,200 x 38 mm
U11026 (U1026) Crystal White	A1	0.88	Neutral plain colours	S0502-G50Y	9016	●	●	●	
U11027 (U1027/W1027) Icy White	B1	0.82	Neutral plain colours	S0505-R60B		●	●	●	●
U11102 (U102) Chalk	C1	0.85	Neutral plain colours	S0502-G	9003	●			
U11509 (U1306) Magnolia	D2	0.76	Chromatic plain colours	S0505-Y20R	similar 1013	●			
U12000 (U1200) Volcanic Black	C2	0.05	Neutral plain colours	S8502-B	9005	●	●	●	
U12168 (U1168) Cashmere	E1	0.51	Chromatic plain colours	S2002-Y50R		●		●	
U12188 (U1188) Light Grey	D1	0.58	Neutral plain colours	S2000-N	7035	●	●	●	●
U12211 (U1211) Lava	B2	0.13	Chromatic plain colours	S7005-Y50R		●			
U12290 (U1290) Anthracite	A1	0.16	Neutral plain colours	S6502-B		●	●	●	
U15193 (U1193) Cuando	E3	0.21	Chromatic plain colours	S6005-Y20R	similar 7006	●			
U16002 (U1191) Congo	B3	0.32	Chromatic plain colours	S4005-Y50R		●			
U17005 (U1669) Carmine Red	B4	0.17	Chromatic plain colours	S2070-Y90R	3000	●			
U17013 (U1653) Mimosa	E2	0.66	Chromatic plain colours	S0520-R20B		●			
U18010 (U1762) Cirrus	A3	0.53	Chromatic plain colours	S0040-B		●			
U18014 (U1766) Stratus	D3	0.18	Chromatic plain colours	S4040-B		●			
U19502 (U1878) Lime	A4	0.17	Chromatic plain colours	S4040-G40Y		●			
U19508 (U1816) Chartreuse	C3	0.51	Chromatic plain colours	S1050-G40Y		●			
R20021 (R4223) Lindberg Oak	E4	0.45	Striped plank			●			
R24029 (R5829) Fjord Beech light	C4	0.51	Flowered plank			●			●
R24053 (R5867) Talinn Beech	D4	0.59	Striped plank			●			

¹⁾ Further available sizes:
2,150 x 915 / 950 / 1,050 / 1,300 x 0.8 mm
2,350 x 1,050 x 0.8 mm

NEW!
ALSO
AVAILABLE AS
SOLIDCOLOR

SolidColor. Unadulterated purism. The idea: laminate pigmented through to the core. The result: a homogeneous joint-free look. SolidColor allows a modern and monochrome design to be created with no visible edges or joints. Thanks to the perfectly matched colour of the core paper, SolidColor offers a high-quality alternative to lacquered surfaces or solid materials. Furthermore, SolidColor satisfies the highest quality demands on functionality, durability and ease of use. The sturdy and easy-care material is outstandingly suitable for different applications in both the residential and the object sector, even for surfaces subject to wear such as racks and shelves, furniture fronts, doors and tabletops.

Duropol HPL

Format in mm		Thickness in mm		Textures
Length	Width	0.6	0.8	
Duropol HPL¹⁾				
2,350	1,050		●	XM
2,350	1,300		●	XM
3,050	1,300		●	XM
4,100	1,300	●	●	XM
5,300	1,300	●	●	XM
Duropol HPL Metallic¹⁾				
4,100	1,300	●	●	XM
Duropol HPL SolidColor XTreme²⁾				
4,100	1,300		●	XM

¹⁾ On request also available in sizes from 2,050 to 5,300 x 1,300 x 0.6/0.8 mm

²⁾ On request also available in sizes from 2,050 to 5,300 x 1,300 x 0.8 mm



Duropol flat bonded elements

Format in mm		HPL-Thickness in mm	Overall Thickness in mm										Textures
Length	Width		0.8	9.6	16	17.6	19	20.6	23.6	25	29.6	39.6	
Duropol Element P2³⁾													
2,650	1,300	●				●						XM	
3,050	1,300	●				●						XM	
4,100	1,300	●	●	●	●	●	●	●	●	●	●	XM	
Duropol Element P2 green³⁾													
4,100	1,300	●					●					XM	
Duropol Element MDF plus³⁾													
4,100	1,300	●					●					XM	
Duropol Element SolidColor P2⁴⁾													
4,100	1,300	●	●	●	●	●	●	●	●	●	●	XM	

³⁾ Product structure: front side = reverse side recommended, reverse side W10220 (W220) White SM cover with protective foil recommended for particleboard thicknesses ≥ 16 mm

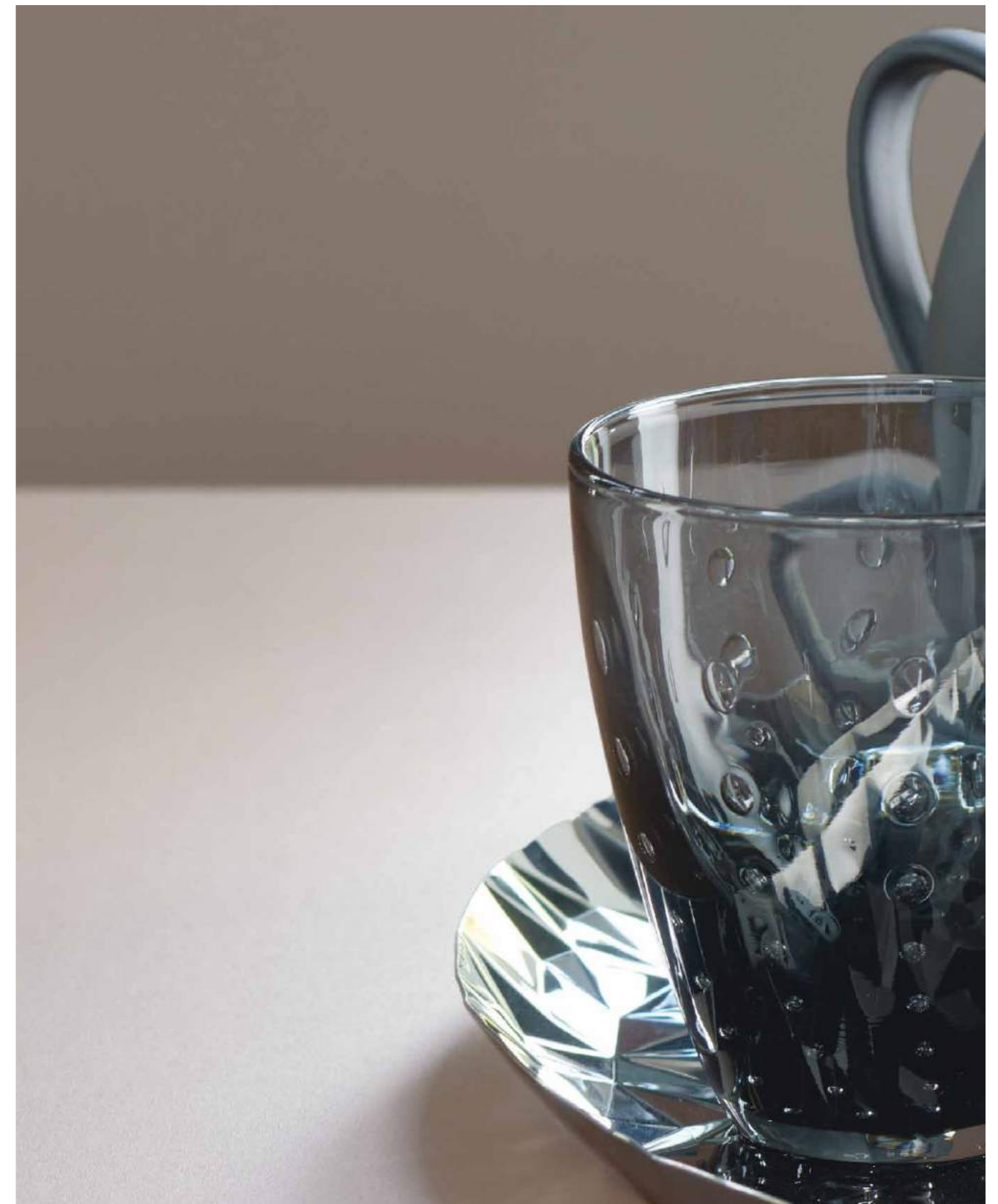
⁴⁾ Product structure: front side = reverse side recommended, reverse side W10220 (W220) White SM cover with protective foil recommended for particleboard thicknesses ≥ 22 mm

Duropol Worktops⁵⁾

Design of front edge	Rear edge	Format in mm						Thickness in mm		Textures
		Length	Width				28.8	38.8		
			600	650	670	900	1,200			
Duropol Worktop, square edged profile										
milled	milled	4,100	●				●	●	●	XM
		5,300	●				●	●	●	XM
milled	milled	4,100	●	●			●	●	●	XM
		5,300	●				●	●	●	XM
Duropol Worktop PerForm										
Laser edge	Protective edge	4,100	●				●	●	●	XM
		5,300	●				●	●	●	XM
Laser edge	Laser edge	4,100			●		●	●	●	XM
		5,300			●		●	●	●	XM
Duropol Worktop Quadra										
Radius 3 mm	Protective edge	4,100	●				●	●	●	XM
		5,300	●				●	●	●	XM
Radius 3 mm	Radius 3 mm	4,100			●		●	●	●	XM
		5,300			●		●	●	●	XM
Duropol Worktop Classic										
Radius 6 mm	Protective edge	4,100	●				●	●	●	XM
		5,300	●				●	●	●	XM
Radius 6 mm	Radius 6 mm	4,100			●		●	●	●	XM
		5,300			●		●	●	●	XM

⁵⁾ Core material: P2 / P2 green

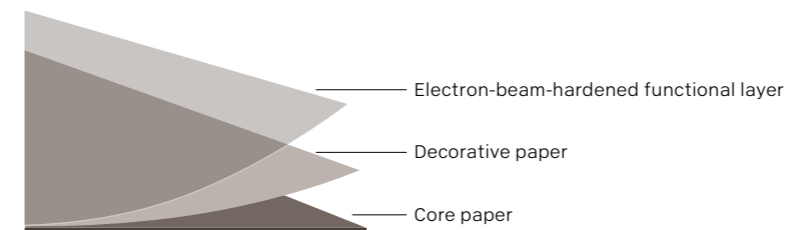
Further information and technical data at www.pfleiderer.com



PROPERTIES

There is hardly any structural difference between Duropal XTreme and a conventional HPL. The product is manufactured analogous to DIN EN 438. The decisive change consists in replacing the overlay by an electron-beam-hardened functional layer. This substitution not only adds colour depth and intensity to the décor, but also provides valuable additional properties.

XTreme Matt can be combined with all of Pfleiderer's standard core materials, thereby allowing for further applications, such as use in wet rooms. Typical applications include wall and door cladding in interior fitting, ship interior fitting, furniture-making and the public and hospitality sector, e.g. restaurants, medical practices, nursery schools.



Properties of XTreme Matt, matt and low-reflective surface

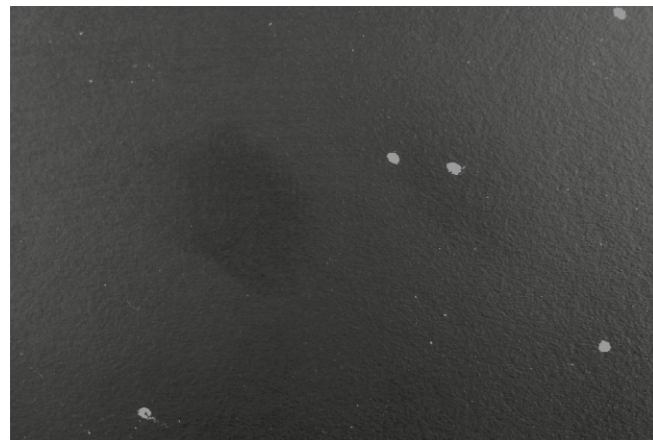
- Improved appearance with enormous transparency of the colour and depth
- Pleasant, warm, velvet haptics
- Practical against fingerprints and traces of fat
- Loadable, consistent and easy-care
- Can be used vertical and horizontal¹⁾
- Can also be combined with nearly every HPL-decors of the Pfleiderer design-collection
- Matt and low-reflective surface
- Everyday dirt, especially heavy grease stains, can be easily removed
- Homogenous and hygienic surface
- Resistant to domestic detergents, chemicals, solvents and disinfectants

¹⁾ With regard to dark and darker decors, mechanical influences on the surfaces may however have the result that contrasts may be perceived more clearly. Regardless of the decor, users should make own tests relevant to the use case before using Duropal XTreme. We definitely recommend, regardless of the decor, to use self-assessment for the respective usage purpose.

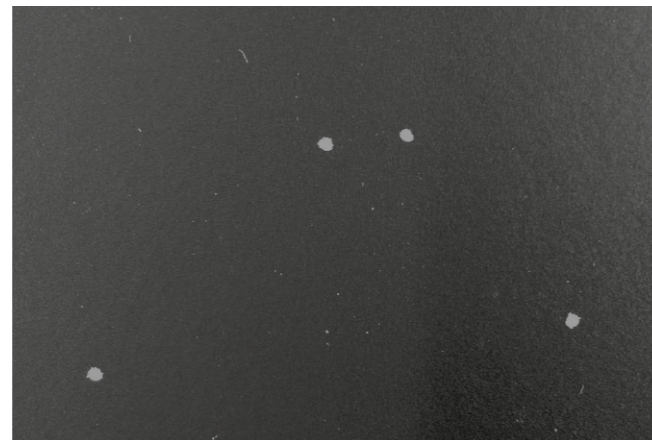
RESISTANCE TO CHEMICALS

XTreme is less sensitive to chemicals than conventional HPL.

Acetic acid

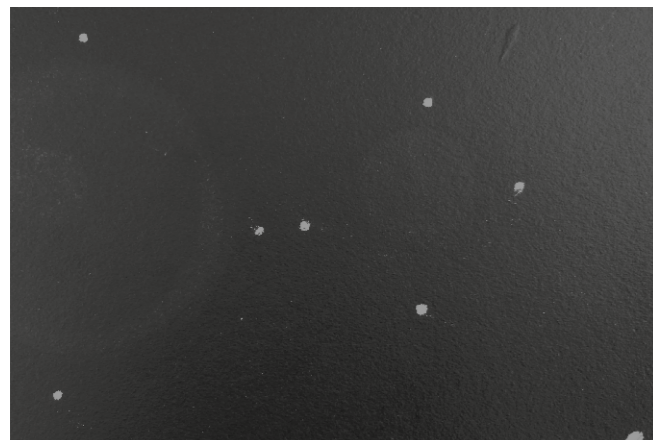


HPL according to DIN EN 438

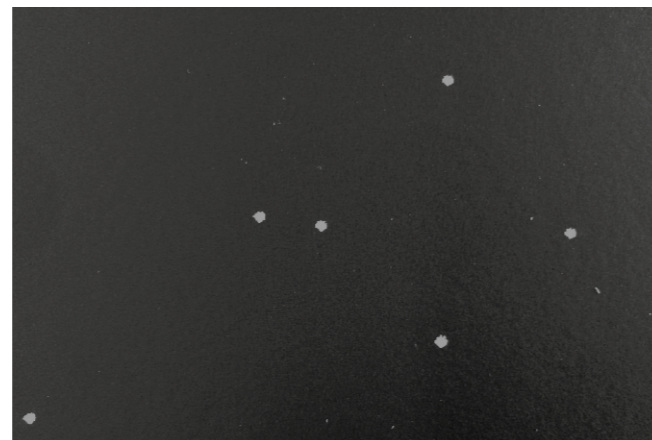


Duropal XTreme

Phosphoric acid 85%

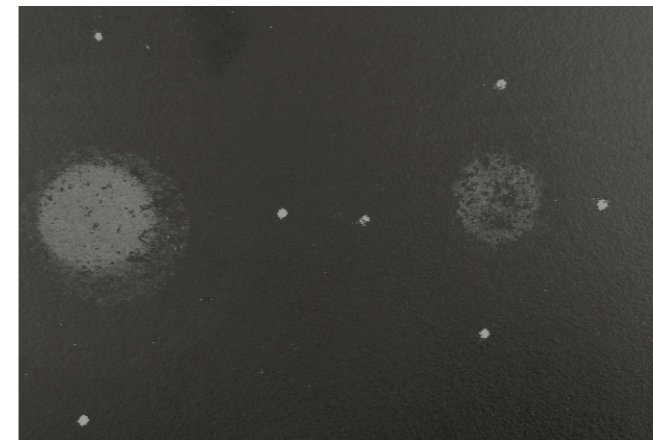


HPL according to DIN EN 438

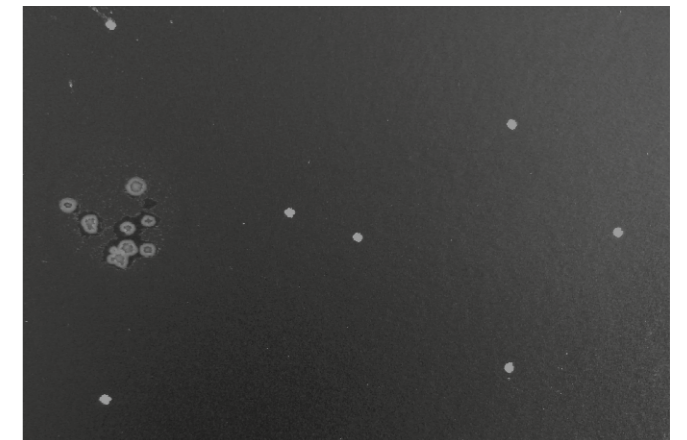


Duropal XTreme

Sulphuric acid 95–97%

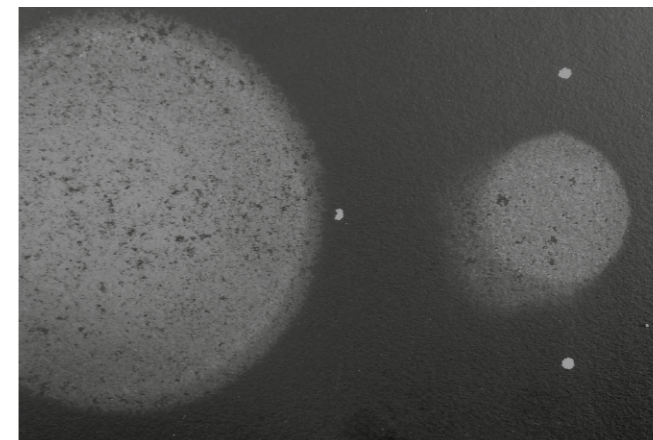


HPL according to DIN EN 438

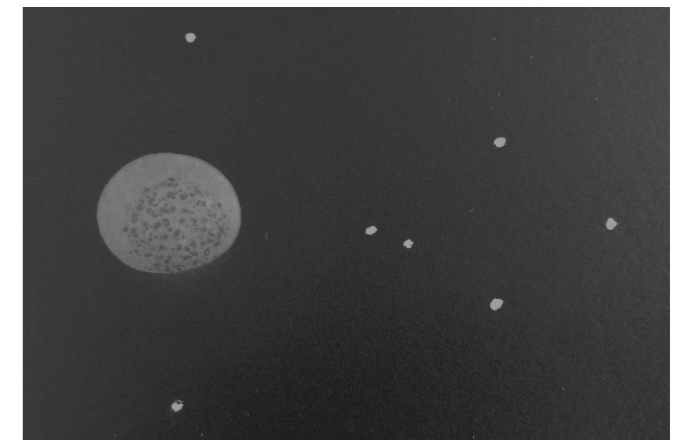


Duropal XTreme

Nitric acid 65%



HPL according to DIN EN 438



Duropal XTreme

Further information and technical data at www.pfleiderer.com

CARE AND CLEANING INSTRUCTIONS



One of the main benefits of XTreme Matt is its improved ease-of-cleaning. Not only everyday dirt, such as coffee stains, but also coarse soiling by grease can be easily removed with a cotton cloth and hot water, leaving no residues.

Basic cleaning

For regular basic cleaning of Duopal XTreme use a solution of hot water and domestic washing-up liquid or, alternatively, an allpurpose cleanser-degreaser. To remove stubborn dirt, let the solution soak for some time. Rinse the damp surface with clear, hot water to remove cleanser residues. Wipe dry with a lint-free cloth in "decor direction" or evenly in the same direction respectively.

Intensive cleaning

Should traces remain on the surface after basic cleaning, use a domestic cleaner for plastic surfaces for intensive cleaning and follow the manufacturer's instructions. For best results, we recommend:

- Henkel – Kitchen Power
- MELLERUD – Kitchen Degreaser
- P&G – Mr Clean kitchen
- Ostermann – Plastic cleaner N/AS, odourless, antistatic

To remove old or intensive soiling, please repeat the process several times, if necessary.

MACHINING AND PROCESSING INSTRUCTIONS

As a matter of principle, please observe all machining and processing instructions and safety rules for standard Duropal products.

Please note that Duropal XTreme may, due to its low surface orientation, result in visual impairments, depend-

ing on application area, lighting and decor used. These impairments do not constitute a defect. To avoid visual and aesthetic impairments, we urgently recommend to observe the panel orientation indicated on the protection foil of the product, in particular with large surfaces.

Please observe the following storage instructions for HPL XTreme:

- No special safety measures or labelling are required.
- Duropal XTreme should always be stored horizontally.
- If horizontal storage is not possible, a slanted position at an angle of approx. 80° is recommended.
- Vertical storage is not recommended for risk of edge damage.
- Use a cover board to protect the product against mechanical damage.

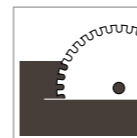


Please observe the following instructions for pre-conditioning of HPL XTreme:

- Prior to lamination, Duropal XTreme and its core material should both be conditioned in the same room.
- In the manufacture of flat bonded elements, place sanded undersides of front and reverse sides against each other for conditioning.
- The product requires conditioning in a covered stack for at least three days.



Sawing / Milling



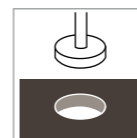
- Cutting tools and machines used for standard Duropal HPL products are also suited for Duropal XTreme.
- The product is suited for machining with milling tools with high concentric accuracy.
- Saw blades must be tungsten carbide tipped (TCT) or better diamond-tipped (DIA). Please use only sharp tools. The result depends on the condition of the tool!
- To improve the cutting edge on the underside, a scoring saw has proved successful.
- Recommendation: Use saw blades with alternating tooth, flat/trapeze tooth at a speed of 4,000 revolutions per minute.

Drilling



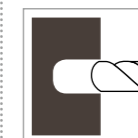
- Use tungsten carbide drills for processing plastic with centring tip at an acute angle of 50–60°.
- Use a low feed rate for through bores and blind holes.
- Owing to the material, the drilling of Duropal XTreme results in a collar at the drill hole edge. This has no effect on the surface quality.
- The collar effect can be reduced through reducing the plunge speed.

Die cutting



- A laminate die cutting tool is not suited for cutting Duropal XTreme.

Finishing



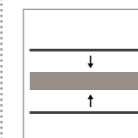
- For chamfering or bevelling use diamond-tipped or tungsten carbide tipped bevel or chamfer cutters.
- Manual finishing using abrasive paper is also possible.

Recesses



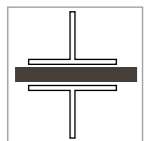
- This requires thorough conditioning of Duropal XTreme and of the core material.
- Small differences in humidity may cause tension.
- Please note: The bigger the recess, the higher the risk of splitting.

Backing



- For backing, we recommend using identical Duropal XTreme material.
- Front and reverse side of the HPL must correspond in direction or sanding direction respectively.

Gluing and pressing



- The material allows both cold and warm pressing.
- Apply glue evenly and generously at the edges.
- Apply uniform press pressure of approx. 3 bar over the entire surface.

Edges



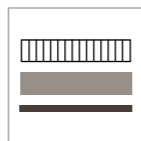
- ABS und PP edges can be glued on to Duropal XTreme using an edge banding machine.
- This may involve additional system configuration costs.
- Always use tungsten carbide tipped (TCT), or better diamond-tipped (DIA) tools.
- Please use only sharp tools!
- Always use pre-milling aggregates with milling tools and shaft angles.

Postforming



- Duropal XTreme is suitable for postforming.
- We recommend: postforming radius = 10 x thickness postforming radius < 10 x thickness.
- Tests carried out by users are required!
- Please note that XTreme already can be post-formed at much lower temperatures. We recommend own tests to adjust your production line.

Core materials



- Core materials suited for conventional Duropal HPL products can also be combined with Duropal XTreme.
- For a high surface stability, please use an MDF core.
- Tip: Especially good results were achieved with Pfeleiderer StyleBoard MDF plus.

Duropal XTreme, Duropal HPL SolidColor and Duropal HPL SolidColor XTreme:

We would be happy to provide you with processing instructions from the tool specialists Leitz and Leuco regarding our Duropal XTreme product. Please note our special processing instructions for Duropal HPL SolidColor and Duropal HPL SolidColor XTreme.

**YOU CAN HAVE A CLEAR
CONSCIENCE WHEN YOU
WORK WITH US.**

Sustainable thinking and action is essential for all of our futures. Especially amongst your customers, the awareness of sustainably produced products that are suitable for a healthy living environment is constantly growing.

Pfleiderer pays attention to the absolute sustainability of all the company's activities. On all levels – economic, ecological and social: we not only manufacture our products with the utmost care, but also within the framework of a certified environment management system. In the production process, Pfeleiderer pays attention to absolute ecology, e.g. in the formaldehyde-free glued panel LivingBoard, which has been synonymous with sustainable construction for almost four decades.

We also have a special responsibility as an employer: for this reason, a culture of trust focused on autonomous action is fostered in our company. Sustainability from which you benefit – through environmentally friendly products, dedicated employees and maximum satisfaction.

ANY QUESTIONS?
WE LOOK FORWARD TO
HEARING FROM YOU.



For customers in the UK:
24-HOUR SERVICE
Samples available to order
around the clock:
Tel.: +44 (0)1625 660 411
Fax: +44 (0)1625 617 301
info@pfleiderer.co.uk
www.pfleiderer.co.uk



For all countries except UK:
SAMPLE SERVICE
Tel.: +49 (0) 9181 / 28 480
Fax: +49 (0) 9181 / 28 482
samples@pfleiderer.com

Your satisfaction is our ultimate goal. But we go beyond this: Our goal is to surpass your expectations. That is why our partners can expect the highest standards in all areas of our operations. Do you have a specific project or just a simple question? Whichever way: We look forward to new challenges – and to your call.



For customers in the UK:
24-HOUR SERVICE

**Samples available to order
around the clock:**

Tel.: +44 (0) 1625 660 411
Fax: +44 (0) 1625 617 301
info@pfleiderer.co.uk
www.pfleiderer.co.uk



For all countries except UK:
SAMPLE SERVICE

Tel.: +49 (0) 9181 / 28 480
Fax: +49 (0) 9181 / 28 482
samples@pfleiderer.com

© Copyright 2017 Pfleiderer Deutschland GmbH.

This information has been compiled with the greatest care. Nevertheless we can assume no liability for the correctness, completeness and up-to-dateness of this information. Colour deviations caused by the printing technology are possible.

In view of the ongoing further development and adaptation of our products, possible amendments to the relevant standards, laws and regulations, our technical data sheets and product documentation expressly do not constitute a legally binding assurance of the properties described there. In particular no guarantee of suitability for a concrete application can be derived. It is therefore the personal responsibility of the individual user in all cases to check the processing and suitability of the products described in this document for the intended application in advance, and to take into consideration the legal framework and the respective state-of-the-art. We furthermore expressly draw attention to the applicability of our General Terms and Conditions.

Our General Terms and Conditions can be found on our Internet website: www.pfleiderer.com

**Pfleiderer employs wood
from certified sustainable
forest management.**



Matching ABS edges can be obtained
directly from your Pfleiderer dealer
or through Rudolf Ostermann GmbH:
www.ostermann.eu



For CPL laminate edges:

Please contact us for a quotation.

Pfleiderer UK Limited · Oakfield House · Springwood Way · Tytherington Business Park · Macclesfield
Cheshire SK10 2XA · England · Tel.: +44 (0) 16 25 660 410 · Fax: +44 (0) 16 25 617 301 · info@pfleiderer.co.uk · www.pfleiderer.co.uk
Pfleiderer Deutschland GmbH · Ingolstädter Straße 51 · 92318 Neumarkt · Germany
Tel.: +49 (0) 9181/28 480 · Fax: +49 (0) 9181/28 482 · info@pfleiderer.com · www.pfleiderer.com